

Customer :

customer

Customer part :

customer part

Comment :

Comment

S1=0.03

S2=0.23

Tmax=561

Tp S2=600.0

PI=0.13

HI=25

Sample =9309.5

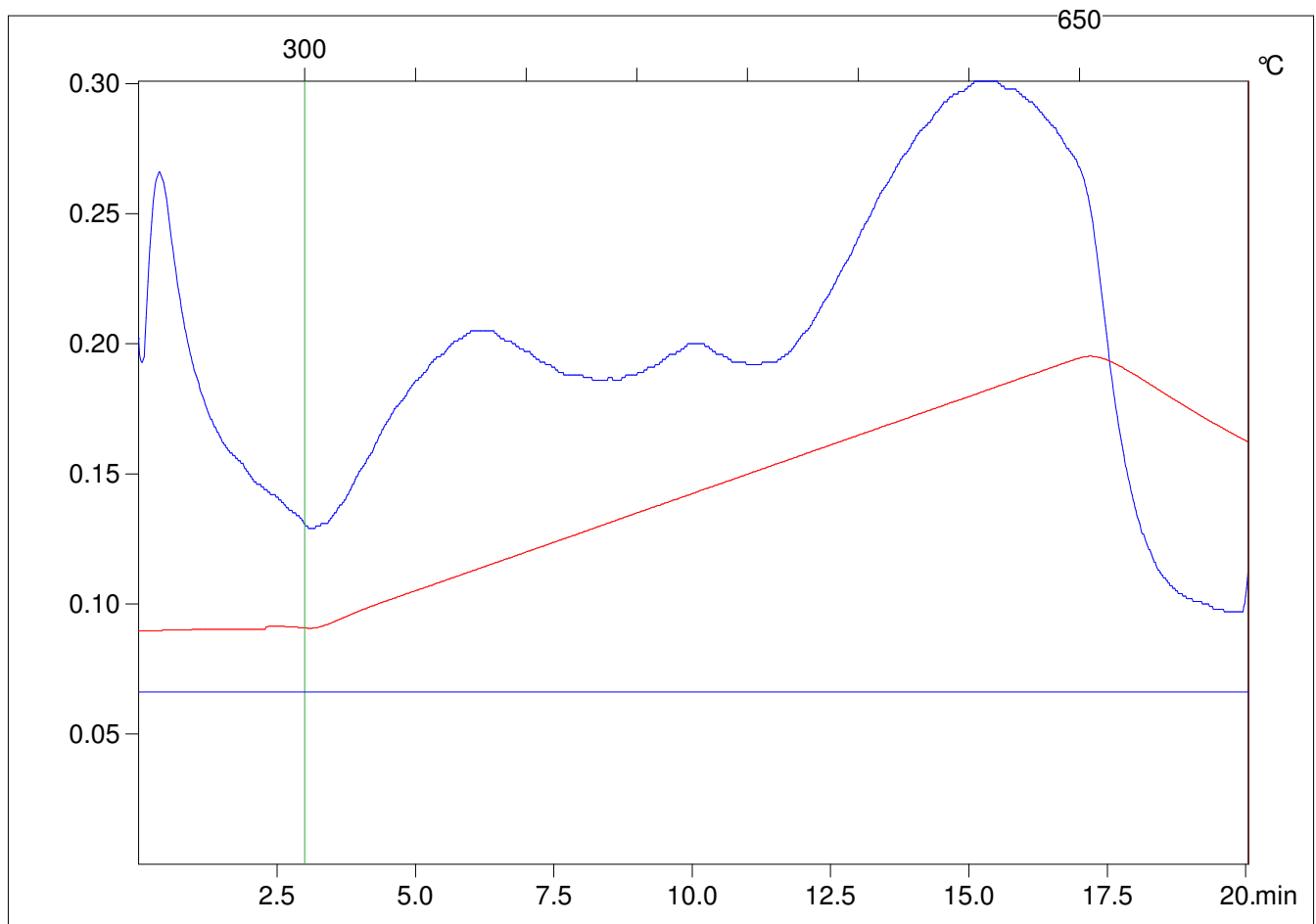
Method =Bulk Rock

Cycle=Basic

KFID(10*9)=1167

Qty =70.2

TOC=0.91



C:\VINC\PK141015\PK069.R00 : FID pyrolysis graphic

State

Pyro Status

Oxi Status